

aiwa

JAPANESE ENGINEERING SINCE 1951

ESTBT-450

USER MANUAL EN

MANUAL DE USUARIO ES

MODE D'EMPLOI FR

BEDIENUNG-SANLEITUNG DE

MANUALE DELL'UTENTE IT

+14

WIRELESS NECKBAND QUAD DRIVER IN-EARPHONE

aiwa

JAPANESE ENGINEERING SINCE 1951

Follow us! aiwaEU



www.eu-aiwa.com

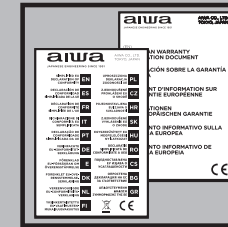
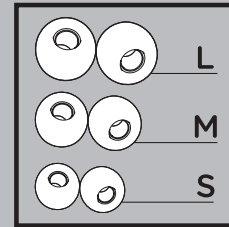
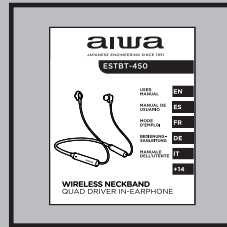
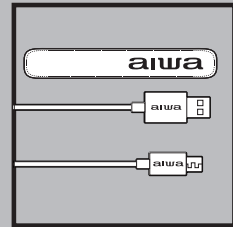
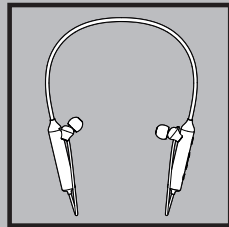
AIWA CO., LTD.
Shinagawa-Ku
TOKYO 141-0022, JAPAN



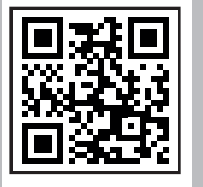
EFO2A0615V.1

Printed in P.R.C.

01. ACCESSORIES

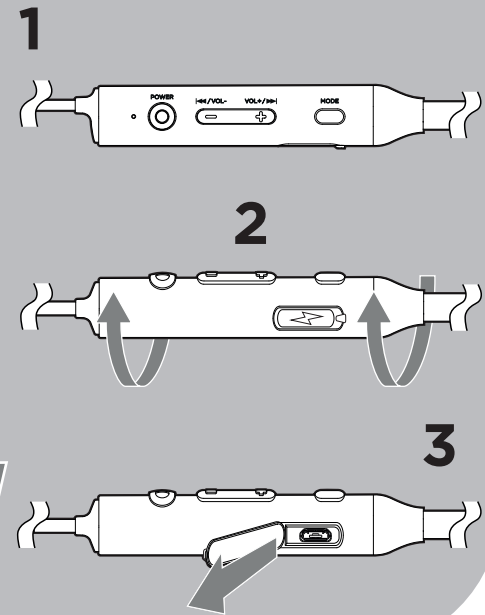
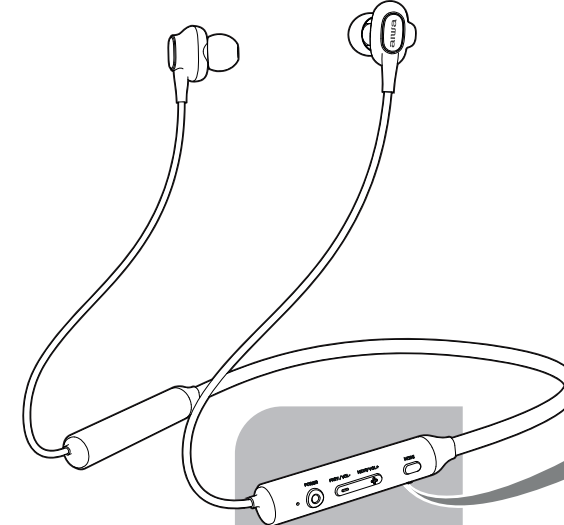
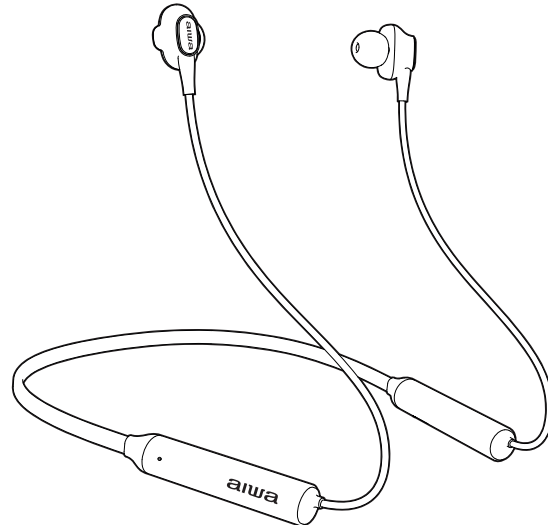
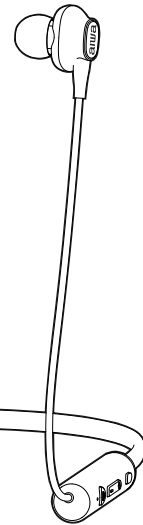
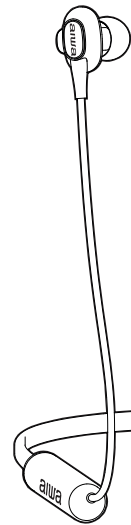


+ aiwa

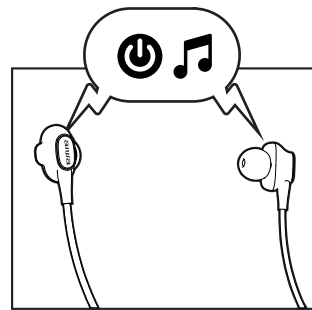
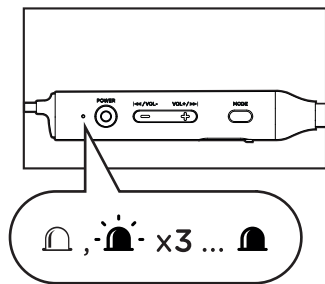
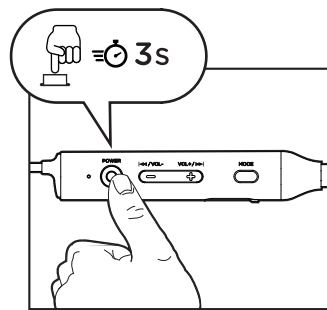


www.aiwa_europe.com

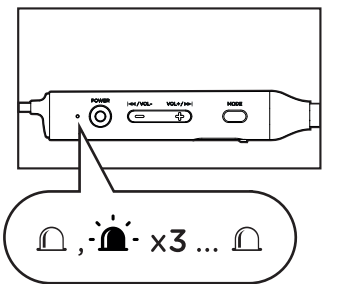
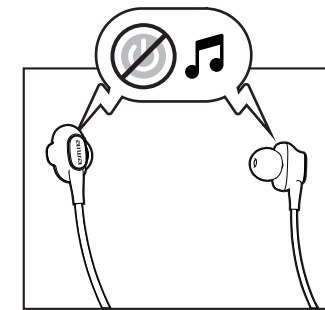
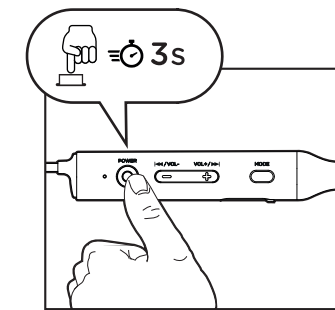
02. OVERALL VIEW



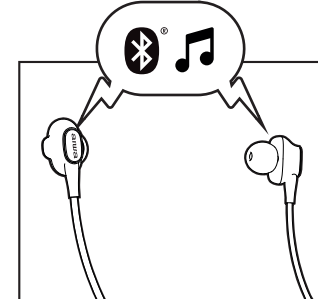
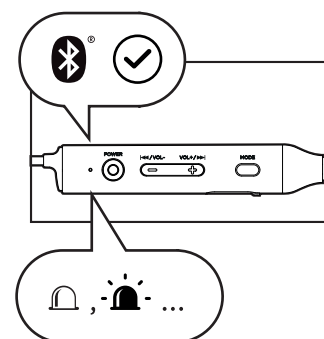
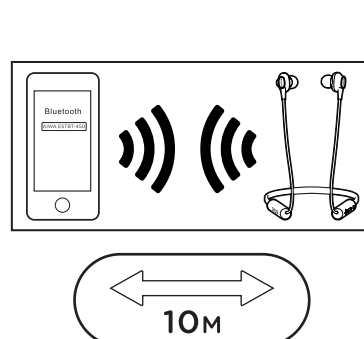
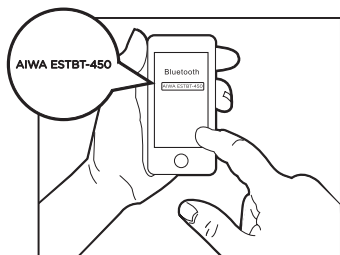
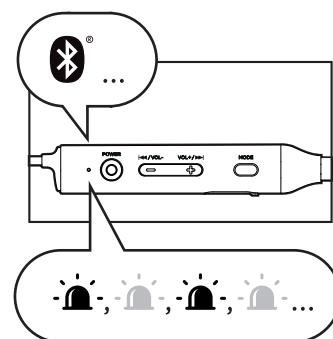
03. TURN ON



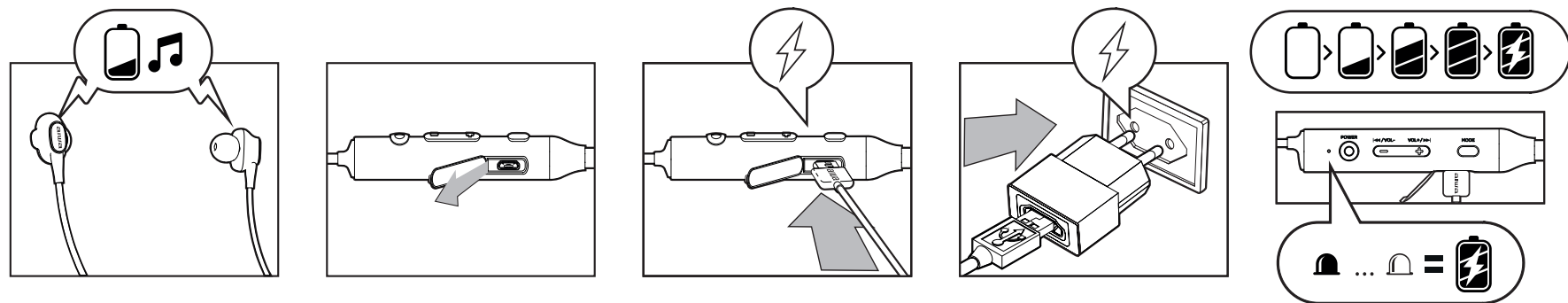
04. TURN OFF



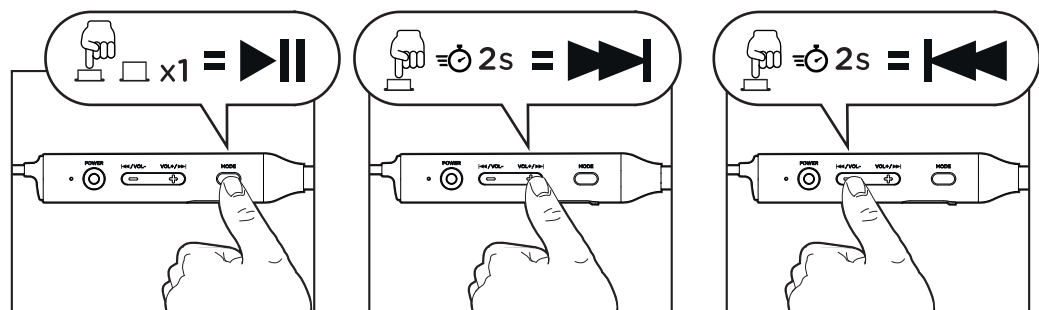
05. BLUETOOTH FUNCTION



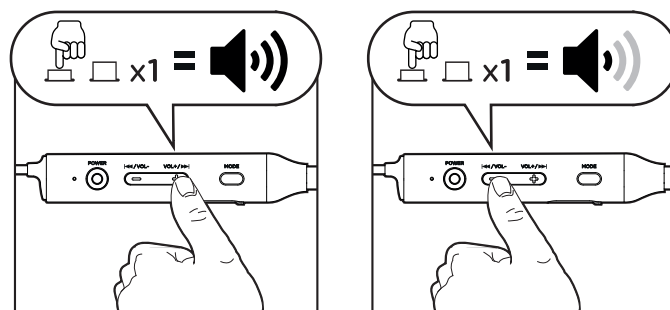
06. BATTERY CHARGE



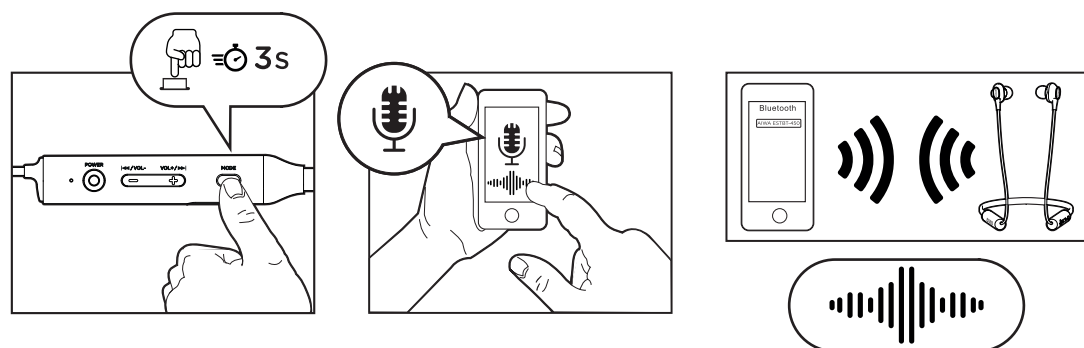
07. MUSIC PLAYBACK



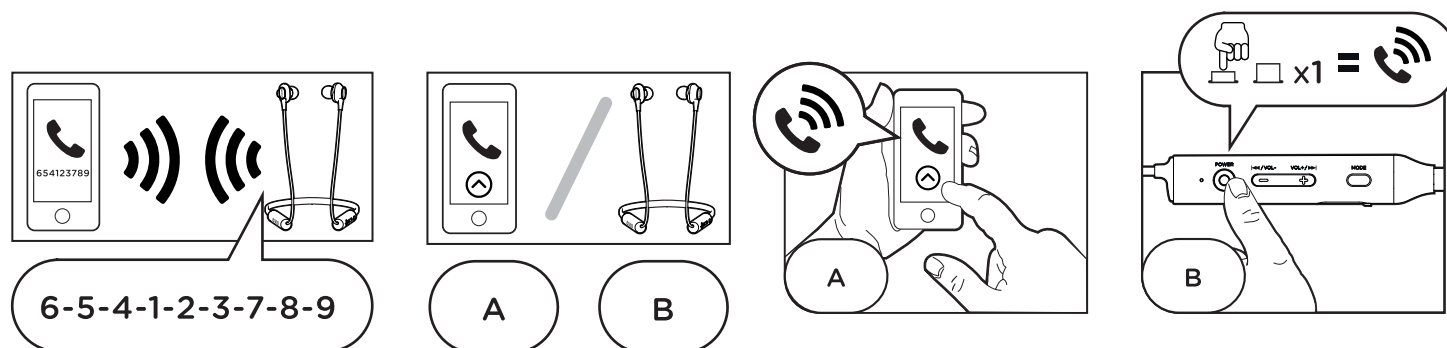
08. VOLUME ADJUSTMENT



09. VOICE ASSISTANT



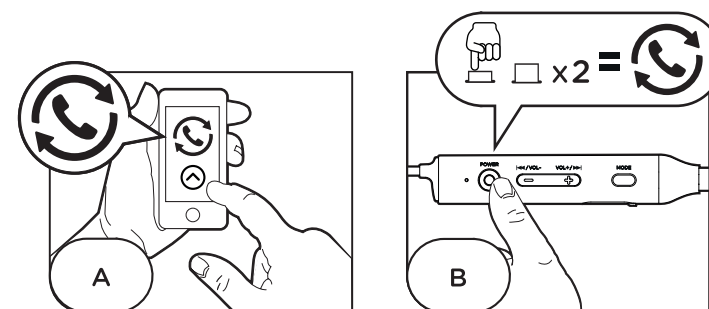
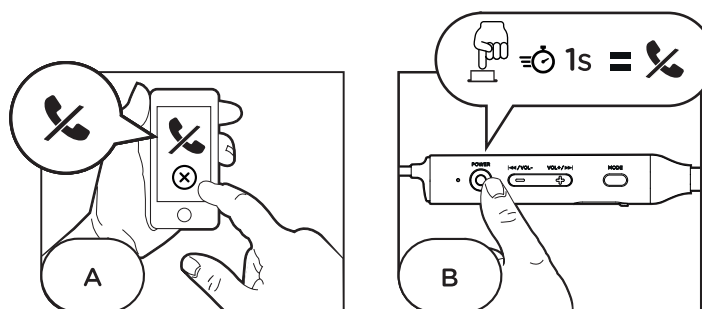
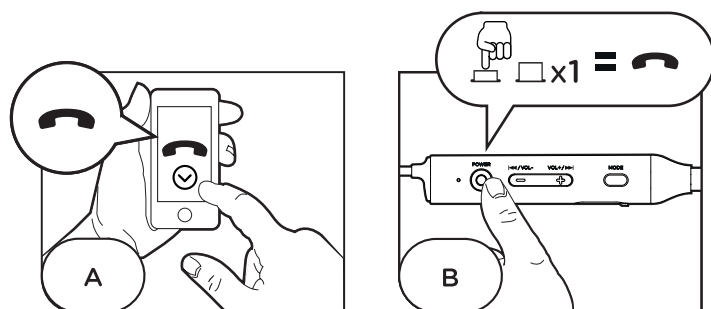
10. ANSWER AN INCOMING CALL



11. HANG UP AN INCOMING CALL

12. DECLINE AN INCOMING CALL

13. REDIAL THE LAST NUMBER



ES- 01.Accesorios. 02.Vista general. 03.Encender. 04.Apagar. 05.Función Bluetooth. 06.Carga de la batería. 07.Reproducción de música. 08.Volumen. 09.Asistente de voz. 10.Responder llamada. 11.Colgar llamada. 12.Rechazar llamada. 13.Rellamar al último número.
FR- 01.Accessoires. 02.Vue d'ensemble. 03.Allumer. 04.Arrêt. 05.Fonction Bluetooth. 06.Charge de la batterie. 07.Lecture de la musique. 08.Volume. 09.Assistance vocale. 10.Répondre à l'appel. 11.Raccrochez l'appel. 12.Rejeter l'appel. 13.Recomposez le dernier numéro.
IT- 01.Accessori. 02.Vista generale. 03.Accendere. 04.Spegner. 05.Funzione Bluetooth. 06.Caricare la batteria. 07.Suonare musica. 08.Volume. 09.Assistente vocale. 10.Rispondi alla chiamata. 11.Riaggancia la chiamata. 12.Rifiuta la chiamata. 13.Chiami l'ultimo numero.
PT- 01.Acessórios. 02.Visão geral. 03.Ligar. 04.Desligar. 05.Funcção Bluetooth. 06.Carregamento da bateria. 07.Reprodução de música. 08.Volume. 09.Assistente de voz. 10.Atender chamada. 11.Rejeitar chamada. 13.Ligue para o último número.
DE- 01.Zubehör. 02.Allgemeine Ansicht. 03.Einschalten. 04.Ausschalten. 05.Bluetooth-Funktion. 06.Aufladen der Batterie. 07.Musik abspielen. 08.Lautstärke. 09.Sprachassistent. 10.Anruf entgegennehmen. 11.Legen Sie den Anruf auf. 12.Anruf ablehnen. 13.Letzte Nummer erneut wählen.
SE- 01.Tillbehör. 02.Översikt. 03.Slä på. 04.Stäng av. 05.Bluetooth-funktion. 06.Batteriladdning. 07.Musik spela. 08.Volym. 09.Röstassistent. 10.Svara på samtal. 11.Avsluta samtal. 12.Avvisa samtal. 13.Återringa det sista numret.
DK- 01.Tilbehør. 02.Generelt synspunkt. 03.Tænd. 04.Sluk for det. 05.Bluetooth-funktion. 06.Opladning af batteriet. 07.Afspilning af musik. 08.Volumen. 09.Stemmeassistent. 10.Besvar opkald. 11.Afslut opkald. 12.Afvis opkald. 13.Genopkald sidste nummer.
NL- 01.Toebehoren. 02.Algemeen beeld. 03.Inschakelen. 04.Uitschakelen. 05.Bluetooth-functie. 06.Het opladen van de batterij. 07.Muziek spelen. 08.Volume. 09.Stemassistent. 10.Beantwoord de oproep. 11.Hang op. 12.Afwijzing van de oproep. 13.Bel het laatste nummer.
FI- 01.Lisälaitteet. 02.Yleiskatsaus. 03.Käynnistä. 04.Sammuta. 05.Bluetooth-toiminto. 06.Akun lataus. 07.Musiikin soittaminen. 08.Tilavuus. 09.Ääniasistentti. 10.Vastaa puheluun. 11.Lopeta puhelu. 12.Hylkää puhelu. 13.Soita viimeinen numero uudelleen.
PL- 01.Akcesoria. 02.Przegląd. 03.Włącz. 04.Wyłącz. 05.Funkcja Bluetooth. 06.Ładowanie baterii. 07.Odtwarzanie muzyki. 08.Tom. 09.Asystent głosowy. 10.Odbierz połączenie. 11.Zakończ rozmowę. 12.Odrzuć połączenie. 13.Wybierz ponownie ostatni numer.
CZ- 01.Příslušenství. 02.Přehled. 03.Zapněte. 04.Vypněte. 05.Funkce Bluetooth. 06.Nabíjení baterie. 07.Přehrávání hudby. 08.Svazek. 09.Hlasový asistent. 10.Přijměte hovor. 11.Ukončíte hovor. 12.Odmítnout hovor. 13.Znovu vytočíte poslední číslo.
HR- 01.Pribor. 02.Opći prikaz. 03.Upaliti. 04.Isključiti. 05.Bluetooth funkcija. 06.Punjenje baterije. 07.Sviranje glazbe. 08.Svezak. 09.Glasovni asistent. 10.Javite se na poziv. 11.Završi poziv. 12.Odbij poziv. 13.Ponovno birajte zadnji broj.
SK- 01.Príslušenstvo. 02.Všeobecný pohľad. 03.Zapnite. 04.Vypnite. 05.Funkcia Bluetooth. 06.Nabíjanie batérie. 07.Prehrávanie hudby. 08.Objem. 09.Hlasový asistent. 10.Prijmite hovor. 11.Ukončíte hovor. 12.Odmietnuť hovor. 13.Znova vytočíte posledné číslo.
HU- 01.Tartozék. 02.Áttekintés. 03.Kapcsolja be. 04.Kapcsolja ki. 05.Bluetooth funkció. 06.Az akkumulátor töltése. 07.Zene lejátszása. 08.Kötet. 09.Hangsegéd. 10.Hívás fogadása. 11.Hívás befejezése. 12.A hívás elutasítása. 13.Az utolsó szám újrahívása.
RO- 01.Accesorii. 02.Prezentare generală. 03.Porniți. 04.Opriți. 05.Funcție Bluetooth. 06.Încărcarea bateriei. 07.Joc de muzică. 08.Volum. 09.Raspunde la apel. 10.Raspunde la apel. 11.Terminare apel. 12.Respingeți apelul. 13.Reapelează ultimul număr.
CS- 01.Додатна опрема. 02.Преглед. 03.Укључи. 04.Искључи. 05.Блуеуотх функција. 06.Пуњење батерије. 07.Свирање музике. 08.Запремина. 09.Гласовни асистент. 10.Одговорите на позив. 11.Прекидање. 12.Одбиј позив. 13.Поновно бирање задњег броја.
BG- 01.Акcesoари. 02.Преглед. 03.Вкључете. 04.Искључете. 05.Блуеуотх функција. 06.Зареждане на батеријата. 07.Игра на музика. 08.Обем. 09.Гласов асистент. 10.Вземете повикване. 11.Край на повикване. 12.Отхвърляне на повикване. 13.Повторно набиране на последния номер.
GR- 01.Αξεσουάρ. 02.Επισκόπηση. 03.Ενεργοποίηση. 04.Απενεργοποίηση. 05.Λειτουργία Bluetooth. 06.Φόρτιση μπαταρίας. 07.Παίζοντας μουσική. 08.Όγκος. 09.Βοηθός φωνής. 10.Απάντηση κλήσης. 11.Τέλος κλήσης. 12.Απόρριψη κλήσης. 13.Επανάκληση τελευταίου αριθμού.