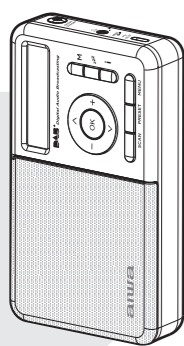


# aiwa®

Japan est1951

## RD-40DAB



QUICK GUIDE **EN**

GUÍA RÁPIDA **ES**

GUIDE RAPIDE **FR**

KURZANLEITUNG **DE**

GUIDA RAPIDA **IT**

+16

**PORTABLE CLOCK RADIO**  
DAB+/DAB/FM-RDS

# aiwa®

Japan est1951

Follow us! aiwaEU



www.eu-aiwa.com

AIWA CO., LTD.  
Kita-Ku  
TOKYO 115-0045, JAPAN

©AIWA EUROPE S.L.  
All Rights Reserved.

Printed in P.R.C.

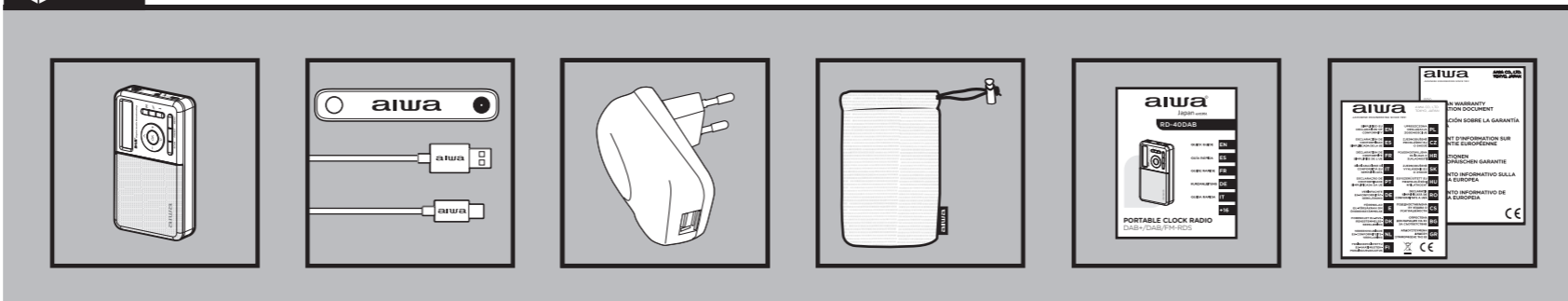


ED06ED00

**RD-40DAB**



### 01. WHAT'S IN THE BOX?

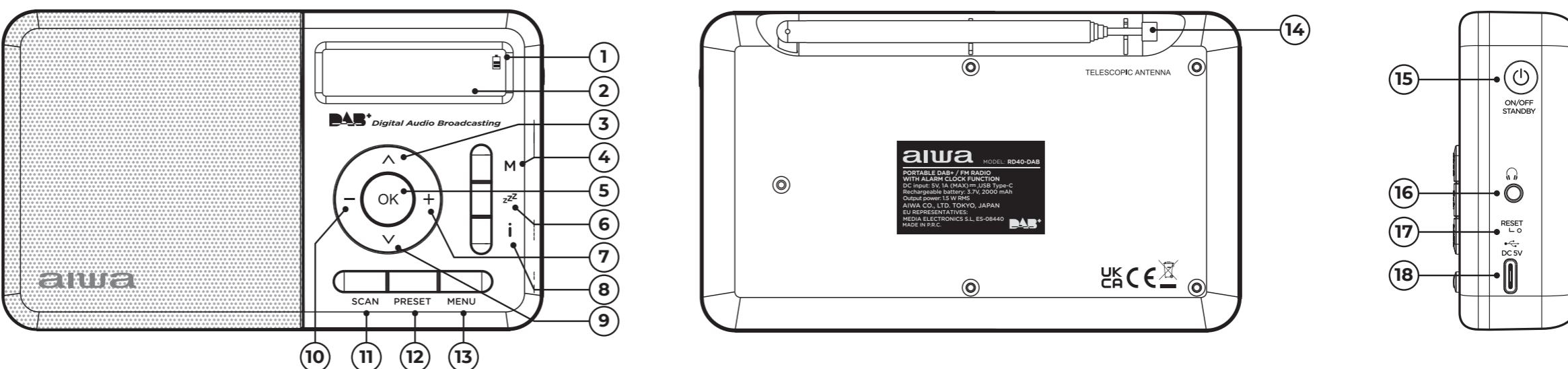


+ aiwa



www.eu-aiwa.com

### 02. OVERALL VIEW



1. Battery Charge Icon  
2. LCD Display  
3. Button to scroll

4. M (MODE) Button  
5. OK (SNOOZE) Button  
6. (SLEEP) Button

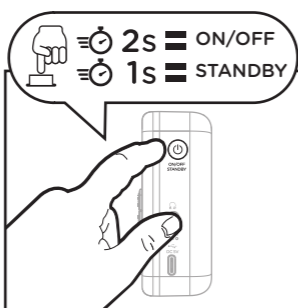
7. Volume up button  
8. i (INFO) Button  
9. Button to scroll

10. Volume down button  
11. SCAN Button  
12. PRESET Button

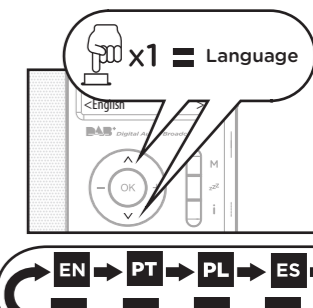
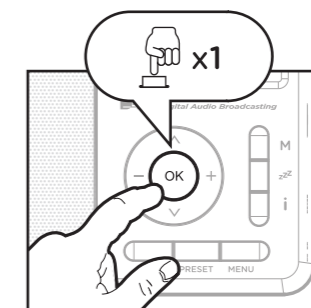
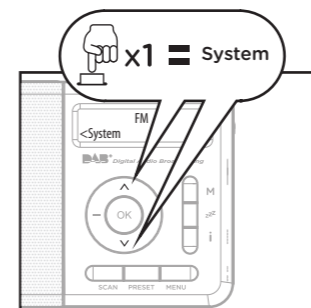
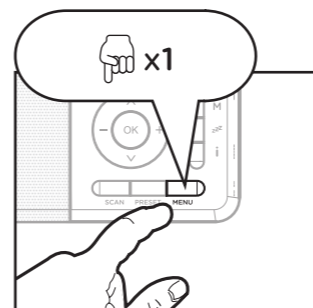
13. MENU Button  
14. Telescopic Antenna  
15. Button ON/OFF/Standby

16. Headphone jack  
17. RESET hole  
18. DC 5V Charging Jack

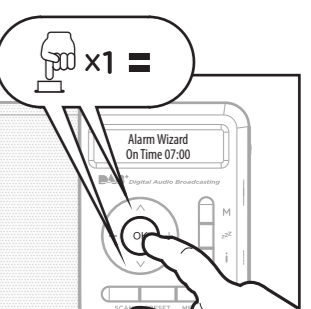
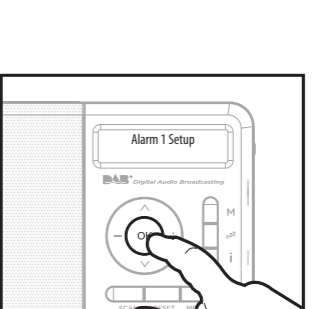
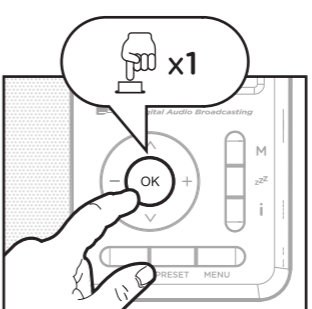
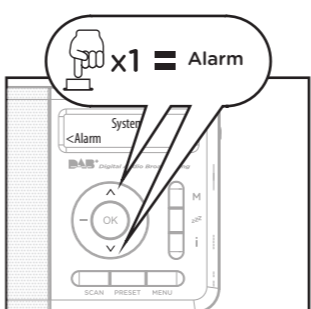
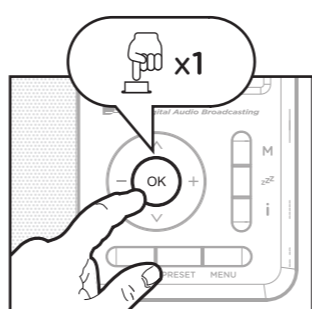
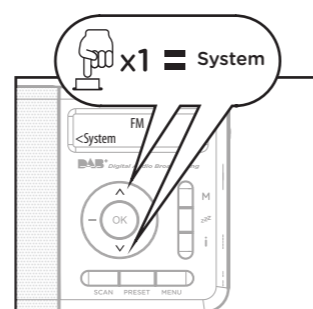
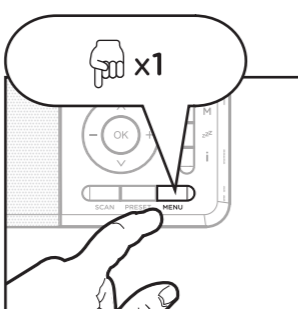
### 03. POWER ON/OFF/STANDBY



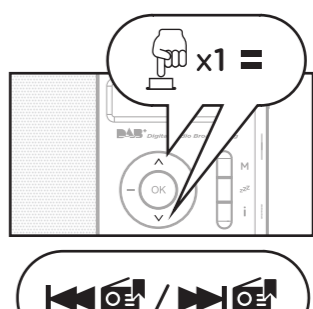
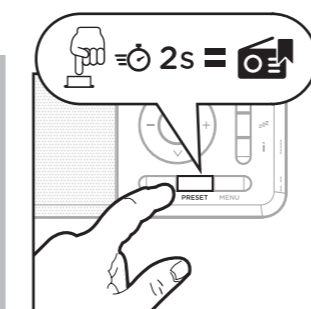
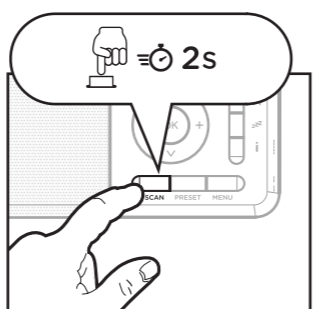
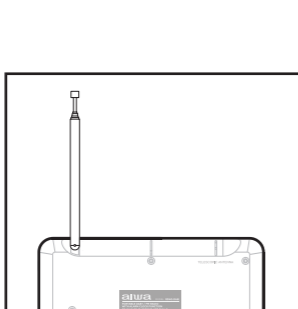
### 04. LANGUAGE SETTING



### 05. ALARM SETTING



### 06. DAB MODE AUTO SCAN RADIO STATIONS / STORING STATIONS MANUALLY (UP TO 50 RADIO STATIONS) / \*DELETE STATION



\* To eliminate stations: press the menu button and go to the prune submenu to delete the station.

### 07. FM MODE AUTO SCAN RADIO STATIONS / PRESET STATION STORAGE (PS) (UP TO 50 RADIO STATIONS WILL BE STORED AS PRESETS) / SEARCH RADIO STATIONS MANUALLY

